



10 Dunholme Way,
Doe Lea S44 5GF

£329,950



WILKINS VARDY

£329,950

*** MAPLE - BRAND NEW 'A' RATED ENERGY EFFICIENT DETACHED HOME - SECLUDED POSITION ACCESSED ACROSS PRIVATE DRIVEWAY - FOUR DOUBLE BEDROOMS - SOLAR PANELS & EV CHARGING - CONVENIENTLY PLACE FOR JUNCTION 29 OF THE M1 - GOOD SIZED TURFED AND FENCED PLOTS ***

Tucked away off East Street down this secluded private drive are these five superbly appointed detached houses, with a delightful green outlook to the front and playing fields behind. Each house has been thoughtfully designed and offers fantastic accommodation, generous plots and a large single garage. Energy efficiency is at the heart of these builds, with solar panels and EV charging included.

*** Book to view these superb houses that are now ready for occupation ***

- BRAND NEW 'A' RATED ENERGY EFFICIENT FAMILY HOMES
- SOLAR PANELS INCLUDED ON EACH PLOT
- WASTE WATER HEAT RECOVERY SYSTEM - ADDING TO ENERGY EFFICIENCY
- 10 YEAR NHBC NEW BUILD WARRANTY
- SALES ASSIST AVAILABLE - SELL YOUR OWN PROPERTY FOR FREE
- EV CAR CHARGING POINT INCLUDED ON EACH PLOT
- FOUR GOOD SIZED DOUBLE BEDROOMS
- INTEGRATED APPLIANCES INCLUDED
- OFF STREET PARKING & LARGE SINGLE GARAGE
- BOOK A VIEWING TODAY AND SEE FOR YOURSELF

General

Gas Central Heating

Choice of Floor Coverings - Not Included

Combined Gas and Electric Smart Meters

10 Year NHBC Warranty

Secondary School Catchment Area - The Bolsover School

Council Tax Band - TBC

SALES ASSIST PACKAGE

The developer is offering a sales assist package where you can sell your home for free.

Terms and conditions apply and your property must be situated within the Chesterfield district and be subject to valuation by Wilkins Vardy.

Floorplans

The floorplans may be handed differently (Mirrored), depending on which plot is being advertised.

On the Ground Floor

A composite front entrance door opens into an ...

Entrance Hall

A staircase rises to the First Floor accommodation.

Lounge

17'1" x 9'10" (5.21m x 3.02m)

A good sized front facing reception room.

Superb Open Plan Family Kitchen

Kitchen

9'1" x 21'1" (2.78m x 6.43m)

To be fitted with a modern range of kitchen units comprising wall, drawer and base units with laminated work surfaces over.

Inset stainless steel sink and drainer with chrome mixer tap.

Integrated appliances to include a dishwasher, stainless steel oven and 5-ring gas hob with stainless steel chimney hood over.

French doors with side lights overlook and open onto the rear garden.

Downlighting.

A choice of flooring.

Cloaks/WC

To be fitted with a white 2-piece suite comprising of a wash hand basin and a low flush WC.

Utility Room

5'1" x 4'11" (1.55m x 1.52m)

To be fitted with base units with laminated work surface over.

Space and plumbing for a washing machine.

Downlighting.

On the First Floor

Landing

Having a built-in linen cupboard.

Bedroom One

12'11" x 14'1" (3.96m x 4.3m)

A good sized front facing double bedroom.

A door gives access into the ...

En Suite Shower Room

7'10" x 4'5" (2.41m x 1.37m)

To be fitted with a white 3-piece suite comprising of a shower cubicle with thermostatic shower, wash hand basin and low flush WC.

Towel rail.

Bedroom Two

11'6" x 12'10" (3.51m x 3.93m)

A good sized front facing double bedroom.

Bedroom Three

10'10" x 10'8" (3.32m x 3.26m)

A good sized rear facing double bedroom.

Bedroom Four

14'1" x 8'5" (4.3m x 2.59m)

A cosy rear facing double bedroom.

Family Bathroom

7'4" x 6'10" (2.26m x 2.1m)

To be fitted with a white 3-piece suite comprising of a panelled bath with fitted screen and shower over, wash hand basin, and low flush WC.

Towel rail.

Outside

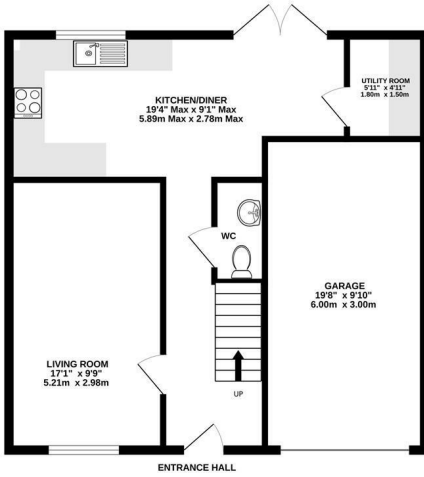
The private access road gives access to the tarmac driveway providing off street parking for two vehicles and leading to the large Single Garage.

There is landscaping to the front garden and turf to the rear garden enclosed by fencing.

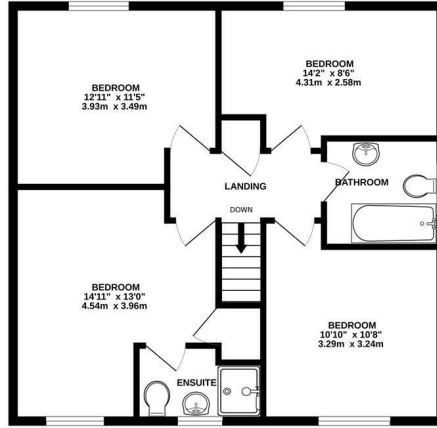
External wall light to front and rear, and outside tap.



GROUND FLOOR
703 sq.ft. (65.3 sq.m.) approx.



1ST FLOOR
711 sq.ft. (66.1 sq.m.) approx.



TOTAL FLOOR AREA: 1414 sq.ft. (131.4 sq.m.) approx.
Whilst every attempt has been made to ensure the accuracy of the floorplan contained here, measurements of doors, windows, rooms and any other items are approximate and no responsibility is taken for any error, omission or mis-statement. This plan is for illustrative purposes only and should be used as such by any prospective purchaser. The services, systems and appliances shown have not been tested and no guarantee as to their operability or efficiency can be given.
Made with Metropix ©2024

Energy Efficiency Rating		
	Current	Potential
Very energy efficient - lower running costs		
(92 plus) A	92	92
(81-91) B		
(69-80) C		
(55-68) D		
(39-54) E		
(21-38) F		
(1-20) G		
Not energy efficient - higher running costs		
England & Wales		EU Directive 2002/91/EC

Environmental Impact (CO ₂) Rating		
	Current	Potential
Very environmentally friendly - lower CO ₂ emissions		
(92 plus) A	92	92
(81-91) B		
(69-80) C		
(55-68) D		
(39-54) E		
(21-38) F		
(1-20) G		
Not environmentally friendly - higher CO ₂ emissions		
England & Wales		EU Directive 2002/91/EC



VIEWINGS

VIEWINGS: All viewings are to be arranged through the agent.

The Consumer Protection (Amendment) Regulations 2014
Only items referred to in these particulars are included in the sale.

We are informed by the vendor that, at the time of our inspection, the central heating system, kitchen appliances, shower units, plumbing installations, and electrical system referred to in these particulars were all in working order, however, no tests or checks have been carried out by ourselves and no warranty can therefore be given.

We have also been advised by the Vendor that any extensions, alterations or window replacements since 2002 have been undertaken with the necessary planning consent and building regulations approval.

Prospective purchasers are advised to make their own inquiries and investigations before finalising their offer to purchase.

SCHOOL CATCHMENT AREAS

Whilst the property is understood to be in the Bolsover School Catchment area, this is NOT a guarantee of admission and the prospective purchaser MUST make direct enquiries to Derbyshire County Council to ascertain the availability of places and ensure satisfaction of their entry criteria.

Validation Of Offers: In order to comply with our statutory obligations and The Ombudsman for Estate Agents Code of Practice, we are required to validate the financial circumstances of any offers made in respect of this property. This will usually entail anyone making an offer being interviewed by our Financial Consultants.

The details in this brochure are believed to be correct but do not constitute an offer, warranty or contract. All room dimensions are approximate. Northwood Homes reserve the right to alter plans, specifications and elevations and to substitute materials during the course of construction. Where purchasers are offered a choice of finish/style, this is subject to the item concerned not having been fitted or ordered at the time of reservation.



CHESTERFIELD | 23 Glumangate, Chesterfield S40 1TX | 01246 270 123

wilkins-varDY.co.uk